



MATAKANA COAST TRAIL TRUST

Pūhoi to Mangawhai Trail - News

Tēnā koe <<First Name>>

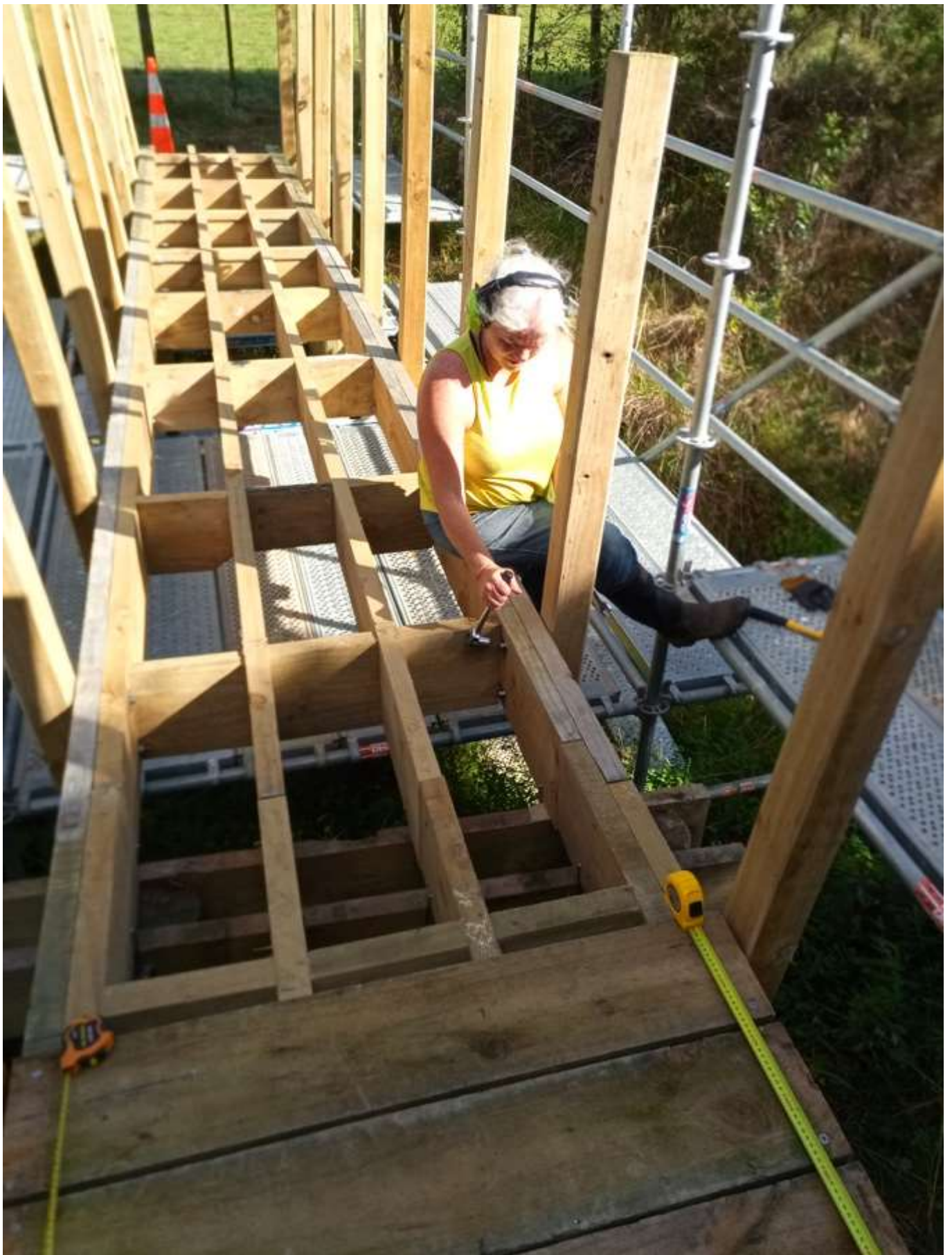
In this edition:

- [Building Bridges with the Mahurangi Trail Society](#)
- [RLTP - Tragic Rodney Road Toll but YOU can help](#)
- [Omaha Pathway - Going to Tender](#)
- [Team Opus - Walking the Walk](#)
- [Te Muri Crossing Project Taking Shape](#)
- [Welcome to our new trustees](#)

Building Bridges with the Mahurangi Trail Society

The Matakana Coast Trail Trust is proud to be funding the work to bring a private trail to public walkway standard and to set in place easements to ensure that this access remains in perpetuity. The 4 Bridges project is being undertaken on the [Farm Forestry Trail](#) on Sandspit Road by the Mahurangi Trail Society. The project involves remediating and bringing 4 existing wooden structures to the standard agreed with Auckland Council.

Hutchinson Consulting has provided a significant amount of professional help. The project team has also received guidance and project support from the AK Council Community Facilities people and the Walking Access Commission. All of the timber components have been cut and fitted off site to eliminate the possibility of treated timber sawdust entering the Duck Creek. As the project nears completion, more than 220 hours of volunteer labour has been invested.



MCTT Trustee Shelley Trotter hands on building bridges.

RLTP: Tragic Rodney Road Toll but YOU can help

It is critical that ***the Pūhoi to Mangawhai trail be prioritised in the RLTP*** (Regional Land Transport Plan). Auckland Transport's current statement that the trail is 'recreational' and not a 'priority' ignores all the contrary data and is against the principles and values of AT's own Vision Zero and Te Ara Haepapa.



The Rodney District has the highest number of cycling and walking road deaths in the Auckland Region and this number is growing! More than one in four deaths within the Auckland region are cyclists or walkers with the majority of deaths occurring on rural roads.

The overall burden of injury has been estimated to be approximately 50% higher in our Maori population.

Getting people off high-speed rural roads supports Vision Zero - which aims to eliminate transport-related deaths and serious injuries plus reduces emissions.

You can help by taking the time to have your say.

Give feedback on the [AT Feedback page](#) for the RLTP.

You can send additional information by emailing a submission to daniel.mccabe@at.govt.nz.

Mention your support of MCTT's trail network and the need to establish rural walking and cycling routes that are off road as a priority.

All ages ride bikes and we need to build the network of safe walking, cycling and recreational trails together.



Omaha Pathway

The long awaited Omaha pathway connection from the Omaha Community Centre to the Roundabout on Omaha Road is approved and going out to tender this month for construction this winter!

MCTT trustee Martin Dancy reports "The community are ecstatic and grateful for all the support received".

Team OPUS - Walking the Walk

For more than a year, a specialist company, WSP OPUS have been working closely with the MCTT. Lately they have been involved in extensive walks over public and private land as they finalise detailed engineering and route plans for the entire length of the Pūhoi to Mangawhai trail and localised transverse connections.

This amounts to somewhere near 250km of walking. The team have walked the trail with a GPS unit following the intended alignment. This means they have needed to climb fences, cross swamps and ravines, bushwhack through gorse and pampas and fend off hordes of nesting pukekos, sandflies and other hazardous beasts.



Team WSP Opus - Walking the walk

The findings will be presented as part of a comprehensive business case to Government Ministers and MP's mid-May to seek funding for the project.

Upon completion, the trail (Our Trail) will easily be New Zealand's most popular, most accessible and arguably, our most beautiful recreational trail.

Te Muri Crossing Project Taking Shape

The Mahurangi Coastal Trail Trust is well underway with fundraising for the Te Muri Crossing Project. They are hosting a High Tea at Tu Ngutu Villa in Mahurangi West on Sunday 30 May featuring Sir Peter Gluckman as the guest speaker.

Tickets are available to the event from [The Mahurangi Coastal Trail trust](#).

For those of you who do not know the area, Te Muri beach is a picturesque sandy beach that is on the north side of the Puhoi River and adjacent to the Mahurangi Regional Park. Currently it is only accessible to the public by wading across the Te Muri Stream and through extremely sensitive cultural heritage and conservation areas.



The 'crossing' is a 270 metre bridge sensitively spanning the Te Muri stream and is a critical project within the development of Te Muri regional park for a number of reasons;

- The bridge provides improved all-tide public access to Te Muri beach and its campground.
- It redirects human traffic away from sensitive cultural heritage and conservation environmental areas on the spit at the northern end of the beach.
- Is part of our regional plan connecting Te Muri and Mahurangi parks to the inter-regional Matakana Coast Trail connecting Auckland to Northland.

Welcome New Board Members

We are delighted to welcome two new trustees to the Matakana Coast Trail Trust board.

Shelley Trotter, MSc Environmental Science and Geography working on a Certificate of Proficiency in Maori Studies. A long time local Farmer. Especially interested in the route. Often seen carting around laminated photos. Some sections of the trail will be by easement over her farm on Sandspit Rd.

Dave Stott brings a wealth of commercial experience, particularly in the area of engineering, roading and community infrastructure.

In closing, if you have made a donation in support The Matakana Coast Trail Trust and have yet to receive a charitable donations receipt, please email us at mataactnz@gmail.com. We need assurance that you have a receipt, allowing you to claim the donation when you file your tax return.

Ka kite anō au i a koe

Allison Roe

Copyright © 2021 Matakana Coast Trail Trust, All rights reserved.

Want to change how you receive these emails?
You can [update your preferences](#) or [unsubscribe from this list](#).

Grow your business with  **mailchimp**